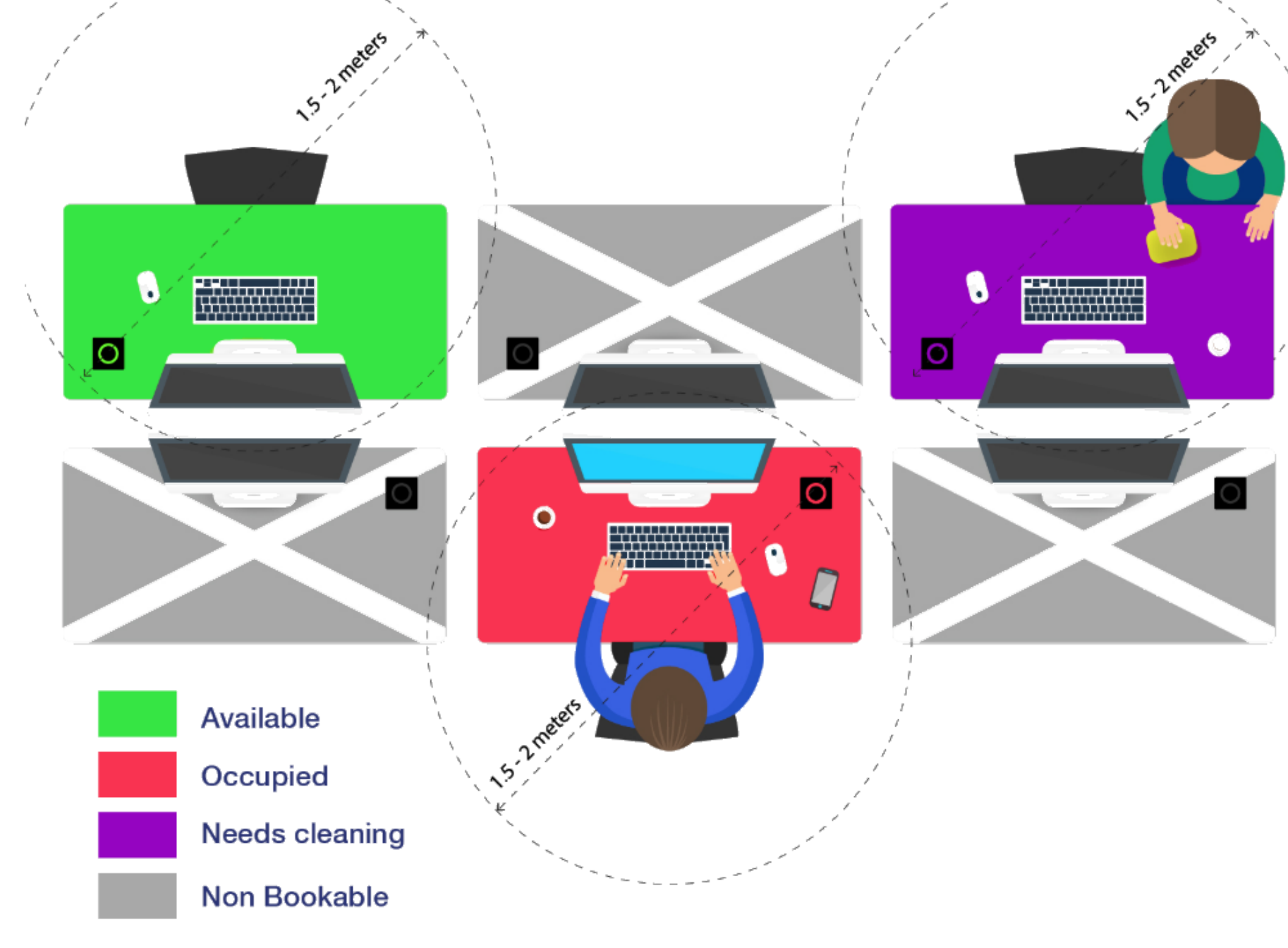


# Returning to the Workplace

The art of meeting has changed and so too has the preferred working environment. The Covid-19 pandemic has had a major impact on us all. With evolving guidance pointing toward a 'new normal' post COVID world, organisations of all sizes must consider appropriate and measured paths they can take towards re-opening workplaces, permitting their employees to begin a return to work safely and with confidence. Any new workplace strategy, supported by appropriate technology solutions, provides the foundation to establish safe environments short term while building in business resiliency through flexible working policies medium and long term.

## Using the Workplace



For many organisations with traditional office layouts, UK social distancing advice of 2m means an immediate reduction of desk space down to 50% or lower, as 1 in every 2 desks becomes unusable. Organisations will need to consider how this now finite desk availability is communicated to employees, so that they can still access a desk where appropriate to their work activity, and plan travel from home accordingly.

With GoBright's desk booking solution, specific spaces can be closed to booking, facilitating social distance guidelines. Employees can search and book a desk in advance from GoBright's web portal or mobile app, or contactlessly at the desk itself, using an existing RFID card.

As employees return to the office, facility managers and other key stakeholders will require access to real time data to ensure the building remains safe. This includes not just current occupancy levels, but also trends that will help shape initial and evolving workplace policies. For example, understanding the busiest hours or days each week will help provide advice when specific employees/teams are recommended to come in. GoBright's analytics can monitor booking and occupancy data, display trends on specific building areas or timeframes.



## With GoBright's Desk Booking solution organisations can:



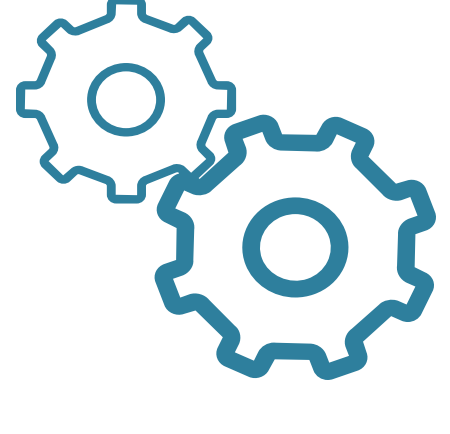
Create safe working environments by 'opening' and 'closing' specific desk spaces, adhering with social distancing guidance and safety driven building capacity requirements.



Provide an easy and flexible approach for employees to book a desk space from PC, mobile app, or at the desk itself. Employees can only see 'open' spaces when booking.



Access real time occupancy data, allowing swift planning and adjustment of workplace policies.

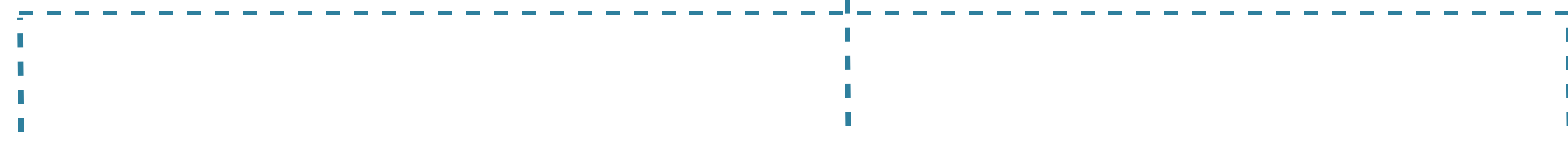


Adjust available spaces quickly as social distancing advice changes.



Ability to integrate with meeting room booking and visitor management solutions from GoBright.

## GoBright's modular approach allows an organisation to choose their back to work desk booking approach:



### Option 1: Simple Desk Booking



o Desk Licence (includes mobile app) only

#### Benefits:

- Cost effective
- Simple setup
- No hardware to install

### Option 2: Desk Booking with Occupancy Sensors



o Desk Licence (includes mobile app),  
o Wireless Desk Sensor  
o Desk Gateway(s)\*

#### Benefits:

- Quicker deployment - no requirement to drill into desks
- True occupancy analytics
- Support for auto release of desks

### Option 3: Full GoBright Desk Booking Experience



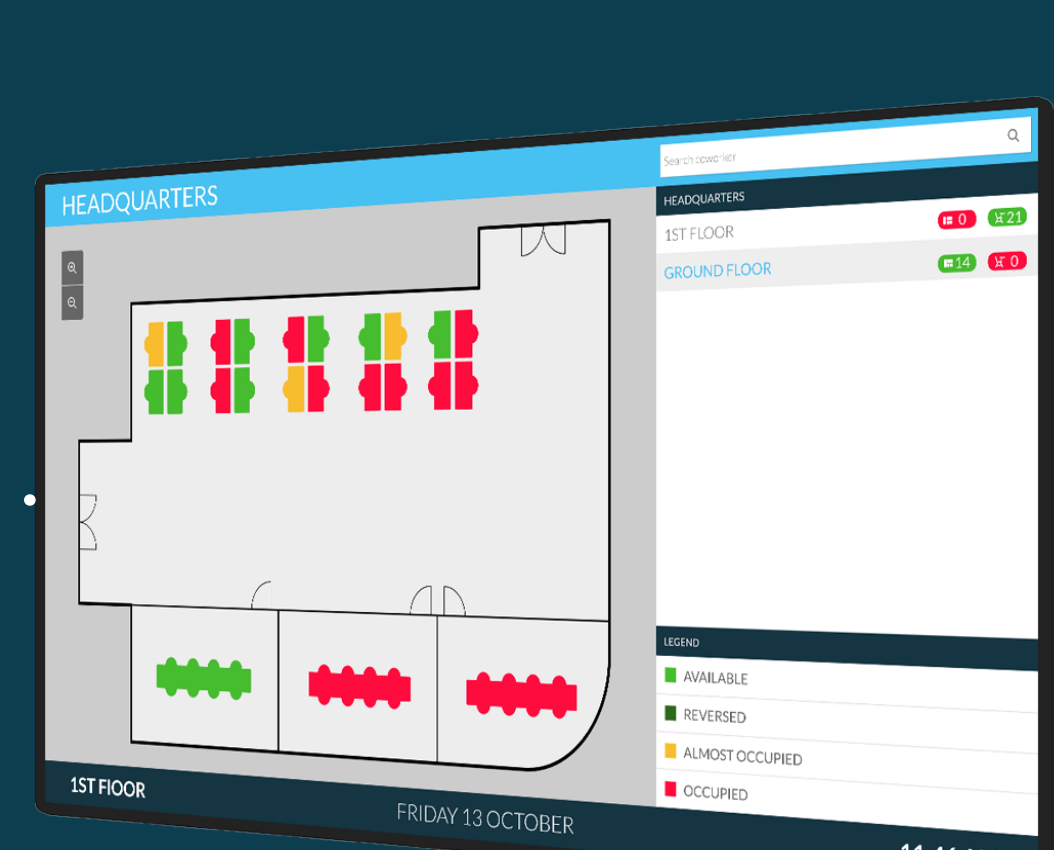
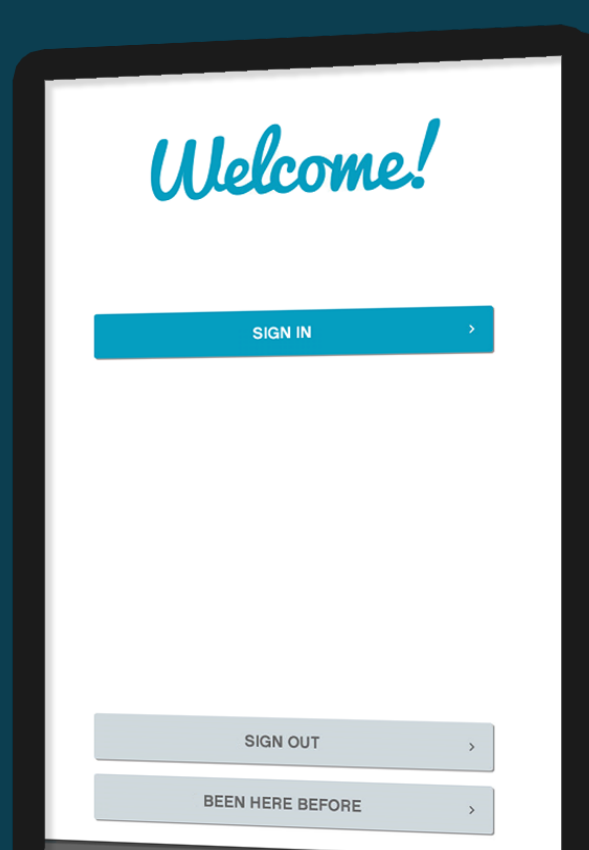
o Desk Licence (includes mobile app)  
o Desk Connect desk module  
o Desk USB power cable  
o Desk Gateway(s)\*  
o Desk Glow Light (optional)  
o Wired Desk Sensor (optional)

\*Number of gateways required subject to desk positions

#### Benefits:

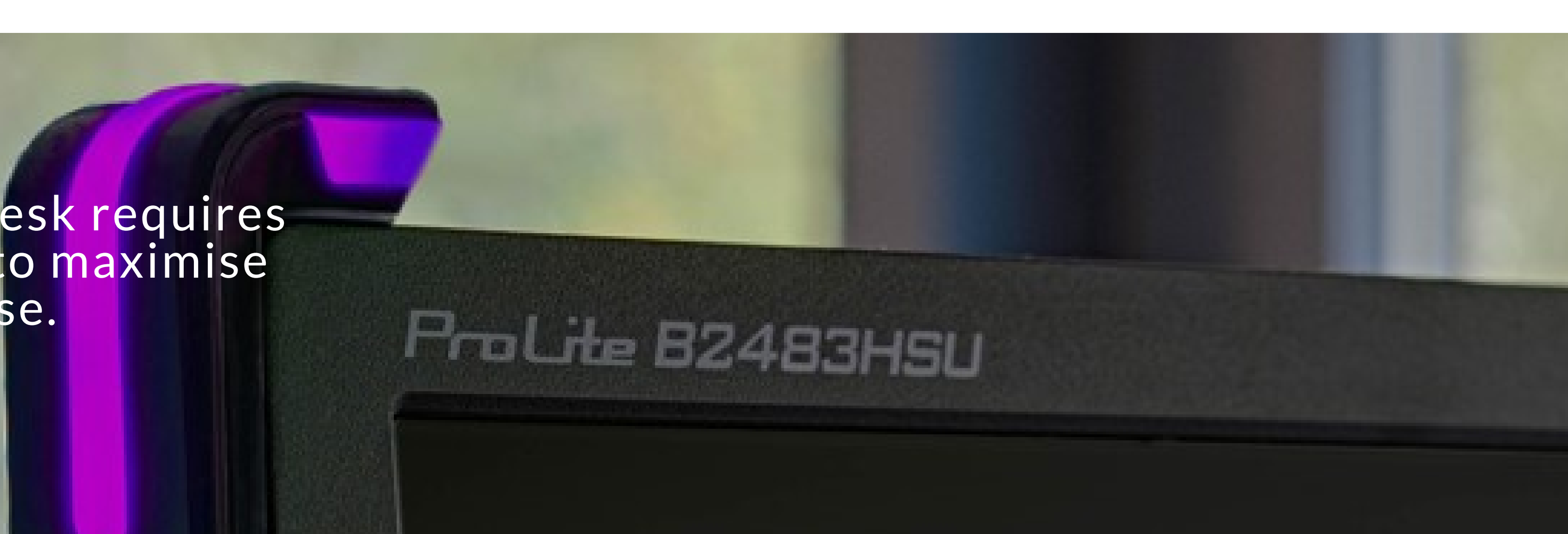
- Complete desk booking approach - book from desk
- Mobile app or portal
- Support for RFID
- Clear status light visible on desk
- True occupancy analytics
- Support for height adjustable desk control

## Combine with GoBright's Room and Visitor solutions:



Coming soon...

New Feature - Purple 'Desk requires cleaning' colour status, to maximise hygiene between desk use.



#### Contact us:

Email: [info@presentations.co.uk](mailto:info@presentations.co.uk)  
Call: +44 (0) 1296642000  
Website: [www.presentations.co.uk](http://www.presentations.co.uk)